



## Exposed Fasten Panels



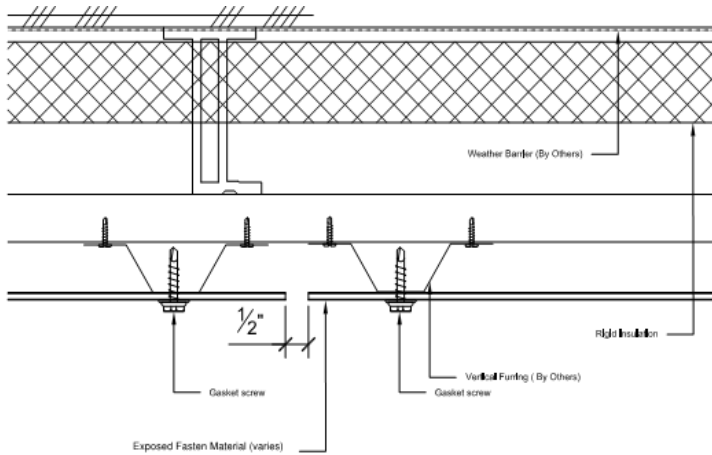
**\* Architectural Exposed Fasten Panels fabricated in the Pacific Northwest**

**\* Exposed Fasten systems offered in a wide variety of materials:**

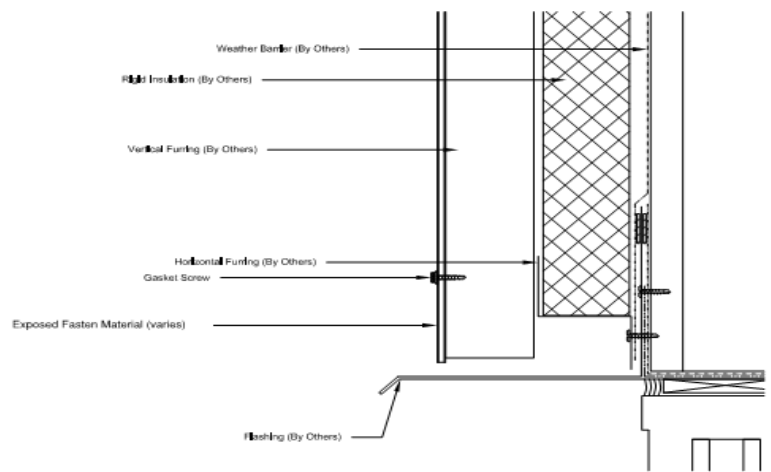
- ~ Solid Aluminum plate up to 0.125 thick**
- ~ Composite panels in aluminum, copper, zinc and stainless**
- ~ Phenolic panels cut to size with holes drilled as required**
- ~ Fiber cement panels cut to size with holes drilled as required**

# TECHNICAL DETAILS

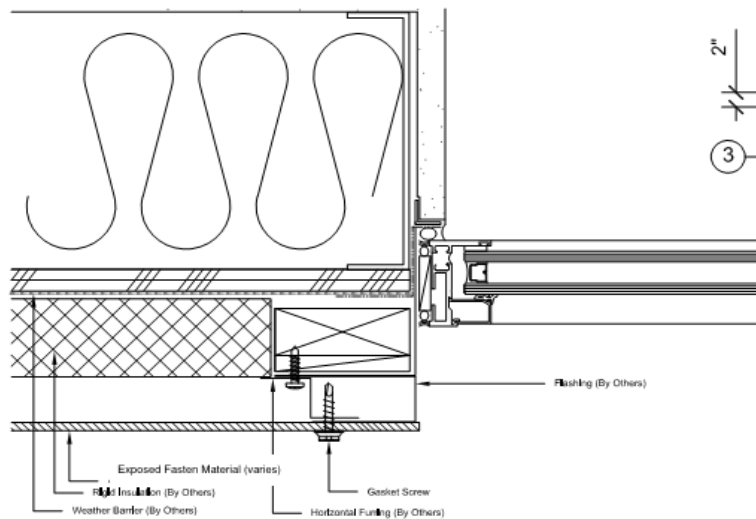
- \* Panels are factory cut and drilled utilizing state-of-the-art CNC equipment; ensuring precise dimensions, less labor in the field, and high quality finish on material edges.
- \* Various panel materials require specific fasteners ~ inquire for a recommendation.
- \* Field installation of Exposed Fasten Systems is fast and allows for a non-sequential process, and ease of repair or replacement if damaged.
- \* Design and detail support available for a complete Rainscreen assembly.
- \* Aluminum sheet and Aluminum composite materials meet industry standard performance tests; AAMA 2605, ASTM E 283, ASTM E 331, ASTM B 209, ASTM D 659, ASTM B 117, ASTM D 2244, ASTM D 2247, ASTM D 3352, ASTM D 968 and ASTM E 84.
- \* Aluminum Panel finishes are post-applied after fabrication by licensed applicators. KYNAR 500 or HYLAR 5000 PVDF recommended for maximum color performance.  
*Inquire for specific warranty information.*



① Typical Vertical Reveal



② Typical Head Detail



③ Typical Jamb Detail

